

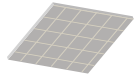


TO ALL OUR VALUED CUSTOMERS,

MAY 3, 2021

We have received a manufacturer price increase on the products listed below:

CGC TILE & DONN GRID



EFFECTIVE MAY 1, 2021
10% INCREASE

INSULATION



EFFECTIVE MAY 3, 2021

BATTS 8% INCREASE
BLOWING WOOL 8% INCREASE

EFFECTIVE JUNE 29, 2021

BATTS 8% INCREASE
BLOWING WOOL 8% INCREASE



EFFECTIVE JULY 1, 2021

COMFORTBATT 6% INCREASE
ALL PRODUCTS 4% INCREASE

DRYWALL



EFFECTIVE JUNE 1, 2021

GYPSUM WALLBOARD 10% INCREASE
GLASS MAT PANELS 8% INCREASE
GYPSUM LAY-IN PANELS (GLIP) 10% INCREASE
CEMENT BOARD & ACCESSORIES 8% INCREASE
JOINT TREATMENT, TEXTURES,
PAINT, TAPE & PLASTERS 6% INCREASE
-CGC SYNKO QUICK DRY TEXTURE PRIMER 100 L TOTE 15% INCREASE
STRAIT FLEX PRODUCTS 10% INCREASE

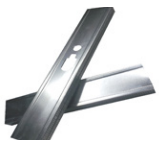
MAY 3, 2021

STEEL

Steel pricing is very volatile and we do not expect the situation to stabilize for some time. Prices are escalating rapidly due to high demand and product availability.

We are expecting Bailey Metal Products to announce the following increases in addition to the January and February increases which have already been implemented:

EFFECTIVE IMMEDIATELY Consolidated Gypsum Supply Ltd will only be extending Quotes/Templates, day to day or project prices for 30 days.



EFFECTIVE MAY 1, 2021
EFFECTIVE JULY 1, 2021

15% INCREASE
15-20% INCREASE

Our Industry is faced with increases on every product that we purchase due to changes in trade regulations, currency fluctuations and natural disasters such as hurricanes and fires, which drive up demand.

These reasons, along with increased operating costs make it necessary that prior to bidding projects, please consult with your representative to ensure that you have our latest pricing. All increases will be implemented on the date above.

We thank you for your continued support and understanding.
If you have any questions or concerns, please contact your local Consolidated Gypsum Representative.

Sincerely,
Consolidated Gypsum Supply