



TO ALL OUR VALUED CUSTOMERS,

MAY 10, 2021

We have received a manufacturer price increase on the products listed below:

INSULATION



EFFECTIVE JUNE 29, 2021

| | |
|--------------|-------------|
| BATTS | 8% INCREASE |
| BLOWING WOOL | 8% INCREASE |



EFFECTIVE JULY 1, 2021

| | |
|--------------|-------------|
| COMFORTBATT | 6% INCREASE |
| ALL PRODUCTS | 4% INCREASE |

DRYWALL



EFFECTIVE JULY 1, 2021

| | |
|--|--------------|
| GYPSUM WALLBOARD | 10% INCREASE |
| GLASS MAT PANELS | 8% INCREASE |
| GYPSUM LAY-IN PANELS (GLIP) | 10% INCREASE |
| CEMENT BOARD & ACCESSORIES | 8% INCREASE |
| JOINT TREATMENT, TEXTURES, PAINT, TAPE & PLASTERS | 6% INCREASE |
| -CGC SYNKO QUICK DRY TEXTURE PRIMER 100 L TOTE | 15% INCREASE |
| STRAIT FLEX PRODUCTS | 10% INCREASE |

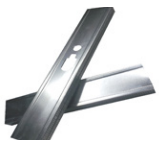
MAY 10, 2021

STEEL

Steel pricing is very volatile and we do not expect the situation to stabilize for some time. Prices are escalating rapidly due to high demand and product availability.

We are expecting Bailey Metal Products to announce the following increases in addition to the January and February increases which have already been implemented:

EFFECTIVE IMMEDIATELY Consolidated Gypsum Supply Ltd will only be extending Quotes/Templates, day to day or project prices for 30 days.



EFFECTIVE JULY 1, 2021

15-20% INCREASE

Our Industry is faced with increases on every product that we purchase due to changes in trade regulations, currency fluctuations and natural disasters such as hurricanes and fires, which drive up demand.

These reasons, along with increased operating costs make it necessary that prior to bidding projects, please consult with your representative to ensure that you have our latest pricing. All increases will be implemented on the date above.

We thank you for your continued support and understanding.
If you have any questions or concerns, please contact your local Consolidated Gypsum Representative.

Sincerely,
Consolidated Gypsum Supply